

ON ADAPTIVE CONTROL OF MOBILE SLOTTED ALOHA NETWORKS

J.-T. LIM*

Department of Electrical Engineering, Korea Advanced Institute of Science and Technology, 373-1, Kuseng-dong, Yuseong-gu, Taejeon, 305-701, Korea

(Received 15 October 1994)

An adaptive control scheme for mobile slotted ALOHA is presented and the effect of capture on the adaptive control scheme is investigated. It is shown that with the proper choice of adaptation parameters the adaptive control scheme can be made independent of the effect of capture.

KEYWORDS: Mobile slotted ALOHA, adaptive control, effect of capture

1. INTRODUCTION

Mobile radio networks are employing a multiple access protocol based on slotted ALOHA [1]–[2]. Though the maximum achievable throughput of the slotted ALOHA is e^{-1} , its performance is degraded by the saturation phenomenon caused by the inherent bistable behavior [3]–[4]. Adaptive control schemes utilizing feedback information [5]–[6] are proposed to maximize the steady state throughput. However, in mobile slotted ALOHA, there is the effect of capture, that is, a packet with the strongest signal may be successfully transmitted in the presence of colliding packets due to fading, shadowing, and spatial distribution of mobile users [1]–[2], [7]–[8]. This effect can substantially improve the throughput of adaptive mobile slotted ALOHA.

In this paper, we apply the framework of [9] to mobile radio networks and investigate the effect of capture on adaptive mobile slotted ALOHA networks with a finite number of buffered users. To avoid duplications, the results of [9]–[10], utilized in this paper, are referred to rather than repeated anew. The reader might want to consult [9]–[10] while reading this paper.

2. ADAPTIVE MOBILE SLOTTED ALOHA

Consider the slotted ALOHA network defined by the following assumptions:

- (a) the channel propagation delay is zero,
- (b) transmission of a packet across a channel requires a unit interval of time,

*To whom correspondence should be addressed.

(c) the network consists of $1 \ll M < \infty$ users communicating through the collision channel; every user has a buffer capable of storing $1 \leq N < \infty$ packets, and generates a packet with probability p_a during each time slot $[n, n + 1)$,

(d) if a packet is generated by a user having its buffer full, the newly generated packet is rejected; otherwise, it is stored in the first empty cell of the buffer,

(e) if a positive acknowledgement is received by an active user at time $n + 1$, the packet transmitted during $[n, n + 1)$ is eliminated from the first cell of its buffer and a packet stored in its m th cell, $m = 2, \dots, N$, instantaneously moves down to be stored in cell $m - 1$.

The main specificity of adaptive mobile slotted ALOHA is that i) the retransmission probability, p , is adjusted according to the feedback information, ii) the signal power difference among packets transmitted simultaneously allows a packet with the strongest signal to be successfully transmitted.

To account for this situation, introduce the following additional assumptions:

(f) every user that has at least one packet attempts a transmission at the beginning of time slot $[n, n + 1)$ with probability $p(n)$ where

$$p(n+1) = \begin{cases} \max \{ p(n) - \frac{1}{M} \alpha_1, 0 \} & \text{if there was a collision} \\ & \text{during } [n, n+1) \\ \min \{ p(n) + \frac{1}{M} \alpha_2, 1 \} & \text{otherwise} \end{cases} \quad (1)$$

and $\alpha_i, i = 1, 2$ is a positive constant to be chosen,

(g) if two or more packets are transmitted simultaneously during $[n, n + 1)$, one packet can be successfully transmitted during $[n, n + 1)$ with probability r due to the effect of capture; without losing much generality, it is assumed that $0 \leq r \leq 0.7$.

3. ASYMPTOTIC ANALYSIS

The network defined by (a)–(g) represents a process of slow-in-the-average Markov walks [10]. Applying the asymptotic theory for analysis of such processes [9]–[10], we obtain the following: Let y_{is} , $i = 1, \dots, N$, denote the steady state value of the averaged normalized occupancy of the i th layer of buffers, and q_s denote the steady state value of the averaged retransmission probability. Then

$$y_{is} = y_{1s} \frac{y_{(i-1)s} - y_{Ns}}{1 - y_{Ns}} \quad (2)$$

$$(1 - y_{Ns}) M p_a = F(y_{1s}, q_s)$$

where $F(y_{1s}, q_s) = F_1(y_{1s}, q_s) + r(1 - F_0(y_{1s}, q_s) - F_1(y_{1s}, q_s))$, $F_0(y_{1s}, q_s) = (1 - q_s)^{M y_{1s}}$, $F_1(y_{1s}, q_s) = M y_{1s} q_s (1 - q_s)^{M y_{1s} - 1}$. Eq. (2) coincides with eq. (20) in [9] with the only difference that $F_1(y_{1s})$ is substituted by $F(y_{1s}, q_s)$. Thus the intersections of that load line $(1 - y_{Ns}) M p_a$ and the transmission line $F(y_{1s}, q_s)$ define the steady state and their stability [9].

The problem of adaptive mobile slotted ALOHA is how to choose the adaptation parameters, α_i , $i = 1, 2$, so that the steady state throughput is maximized. From (1), α_i 's should be chosen to satisfy

$$0 < \alpha_2 = \frac{\alpha_1(1 - F_0(y_{1s}, q_s) - F_1(y_{1s}, q_s))(1 - r)}{1 - (1 - F_0(y_{1s}, q_s) - F_1(y_{1s}, q_s))(1 - r)} \quad (3)$$

Since $M \gg 1$, $F_0(y_{1s}, q_s) \approx e^{-My_{1s}q_s}$, $F_1(y_{1s}, q_s) \approx My_{1s}q_s e^{-My_{1s}q_s}$. Thus

$$F(y_{1s}, q_s) \approx Ge^{-G} + r(1 - e^{-G} - Ge^{-G}) \quad (4)$$

where $G = My_{1s}q_s$. From (4), it is noted that $F(y_{1s}, q_s)$ reaches its maximum with respect to q_s , if

$$q_s = \frac{1}{My_{1s}(1 - r)} \quad (5)$$

As it follows from (3), (4), and (5), the required α_i 's become

$$0 < \alpha_2 = k\alpha_1, \quad k = \frac{(1 - e^{-\frac{1}{1-r}} - \frac{1}{1-r} e^{-\frac{1}{1-r}})(1 - r)}{1 - (1 - e^{-\frac{1}{1-r}} - \frac{1}{1-r} e^{-\frac{1}{1-r}})(1 - r)} \quad (6)$$

The choice of α_i 's depends on the value of r which may be unknown. In order to eliminate this dependency, investigate the coefficient of α_i in (6) with respect to r . Taking into account that $0 \leq r \leq 0.7$, from (6), we obtain that $0.33 < k < 0.43 \forall r \in [0, 0.7]$. Let

$$0 < \alpha_2 = 0.38\alpha_1, \quad \forall r \in [0, 0.7] \quad (7)$$

Then, from (1) and (7),

$$q_s = \frac{1}{My_{1s}(1 - \hat{r})} \quad (8)$$

where \hat{r} is calculated from the following condition obtained from (3), (4), (7), and (8):

$$(1 + \frac{1}{1 - \hat{r}}) e^{-\frac{1}{1-\hat{r}}} = \frac{1 - 1.38r}{1.38 - 1.38r} \quad (9)$$

Fig. 1 shows the relationship between r and \hat{r} . The steady state throughput of adaptive mobile slotted ALOHA with α_i 's according to (6) is

$$F(y_{1s}, q_s) \approx \frac{1}{1 - r} e^{-\frac{1}{1-r}} + r(1 - e^{-\frac{1}{1-r}} - \frac{1}{1 - r} e^{-\frac{1}{1-r}}) \quad (10)$$

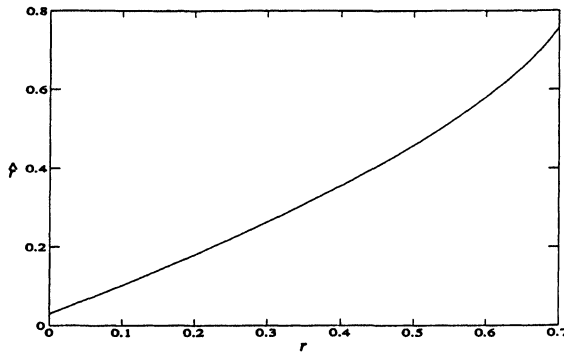


Figure 1. Relationship between r and \hat{r} .

whereas the steady state throughput of adaptive mobile slotted ALOHA with α_i 's according to (7) is

$$F(y_{1s}, q_s) \approx \frac{1}{1 - \hat{r}} e^{-\frac{1}{1-\hat{r}}} + r(1 - e^{-\frac{1}{1-\hat{r}}} - \frac{1}{1 - \hat{r}} e^{-\frac{1}{1-\hat{r}}}) \tag{11}$$

Fig. 2 shows the steady state throughputs of adaptive mobile ALOHA with α_i 's according to (6) and (7). As it follows from Fig. 2, the degradation of the steady state throughput due to the unknown r is negligible. In most cases, r is unknown. Therefore, in such cases, it seems reasonable to choose α_i 's according to (7).

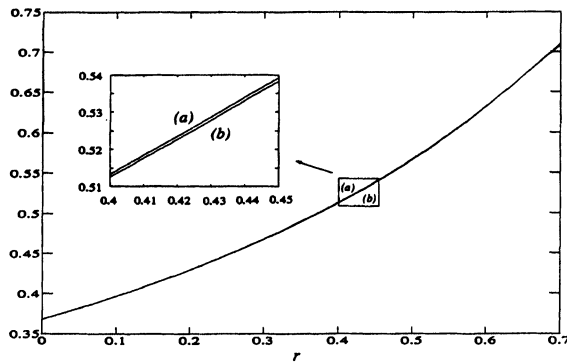


Figure 2. Steady state throughput of adaptive mobile slotted ALOHA. (a) Adaptation parameters according to (6); (b) Adaptation parameters according to (7).

4. CONCLUSIONS

In this paper, the effect of capture on adaptive mobile slotted ALOHA is investigated. It is shown that the steady-state throughput can be maximized by choosing the adaptation parameters according to (6) that depends on the capture probability. It is also shown that this dependency can be eliminated with the negligible throughput degradation by choosing the adaptation parameters according to (7).

References

1. J.-P.M.G. Linnartz, Slotted ALOHA Land-Mobile Radio Networks with Site Diversity, *IEE Proc. I*, 139, 58–70 (February, 1992).
2. R.C. Robertson and T.T. Ha, A Model for Local/Mobile Radio Communications with Correct Packet Capture, *IEEE Trans. Commun.*, **40**, 847–854 (April, 1992).
3. L. Kleinrock and S.S. Lam, Packet Switching in a Multiaccess Broadcast Channel: Performance Evaluation, *IEEE Trans. Commun.*, **COM-23**, 410–423 (April, 1975).
4. A.B. Carleial and M.E. Hellman, Bistable Behavior of ALOHA-Type Systems, *IEEE Trans. Commun.*, **COM-23**, 401–409 (April, 1975).
5. B. Hajek and T. Van Loon, Decentralized Dynamic Control of a Multiaccess Broadcast Channel, *IEEE Trans. Automat. Contr.*, **AC-27**, 559–569 (June, 1982).
6. L. Merakos and D. Kazakos, On Retransmission Control Policies in Multiple-Access Communication Networks, *IEEE Trans. Automat. Contr.*, **AC-30**, 109–117 (February, 1985).
7. A.U.H. Sheikh, Y.-D. Yao, and X. Wu, The ALOHA Systems in Shadowed Mobile Radio Channels with Slow or Fast Fading, *IEEE Trans. Vehic. Technol.*, **39**, 289–298 (November, 1990).
8. C.T. Lau and C. Leung, Capture Models for Mobile Packet Radio Networks, *IEEE Trans. Commun.*, **40**, 917–925 (May, 1992).
9. J.-T. Lim and S.M. Meerkov, Theory of Markovian Access to Collision Channels, *IEEE Trans. Commun.*, **COM-35**, 1278–1288 (December, 1987).
10. J.-T. Lim, S.M. Meerkov, and T. Zeng, Simplified Description of Slow-in-the-Average Markov Walks, *J. Math Anal. & Appl.*, **158**, 476–486 (July, 1991).

Special Issue on Decision Support for Intermodal Transport

Call for Papers

Intermodal transport refers to the movement of goods in a single loading unit which uses successive various modes of transport (road, rail, water) without handling the goods during mode transfers. Intermodal transport has become an important policy issue, mainly because it is considered to be one of the means to lower the congestion caused by single-mode road transport and to be more environmentally friendly than the single-mode road transport. Both considerations have been followed by an increase in attention toward intermodal freight transportation research.

Various intermodal freight transport decision problems are in demand of mathematical models of supporting them. As the intermodal transport system is more complex than a single-mode system, this fact offers interesting and challenging opportunities to modelers in applied mathematics. This special issue aims to fill in some gaps in the research agenda of decision-making in intermodal transport.

The mathematical models may be of the optimization type or of the evaluation type to gain an insight in intermodal operations. The mathematical models aim to support decisions on the strategic, tactical, and operational levels. The decision-makers belong to the various players in the intermodal transport world, namely, drayage operators, terminal operators, network operators, or intermodal operators.

Topics of relevance to this type of decision-making both in time horizon as in terms of operators are:

- Intermodal terminal design
- Infrastructure network configuration
- Location of terminals
- Cooperation between drayage companies
- Allocation of shippers/receivers to a terminal
- Pricing strategies
- Capacity levels of equipment and labour
- Operational routines and lay-out structure
- Redistribution of load units, railcars, barges, and so forth
- Scheduling of trips or jobs
- Allocation of capacity to jobs
- Loading orders
- Selection of routing and service

Before submission authors should carefully read over the journal's Author Guidelines, which are located at <http://www.hindawi.com/journals/jamds/guidelines.html>. Prospective authors should submit an electronic copy of their complete manuscript through the journal Manuscript Tracking System at <http://mts.hindawi.com/>, according to the following timetable:

Manuscript Due	June 1, 2009
First Round of Reviews	September 1, 2009
Publication Date	December 1, 2009

Lead Guest Editor

Gerrit K. Janssens, Transportation Research Institute (IMOB), Hasselt University, Agoralaan, Building D, 3590 Diepenbeek (Hasselt), Belgium; Gerrit.Janssens@uhasselt.be

Guest Editor

Cathy Macharis, Department of Mathematics, Operational Research, Statistics and Information for Systems (MOSI), Transport and Logistics Research Group, Management School, Vrije Universiteit Brussel, Pleinlaan 2, 1050 Brussel, Belgium; Cathy.Macharis@vub.ac.be